

STEVENS
B I K E S

2021
SPORT



// NEVER STOP

The 2021 catalogue photos were taken in Italy - we thank our location partners:

DOLOMITI
BIKEGALAXY



TRAIL
BROTHERS
—Tuscany—



Val di Fassa - the place known for the most spectacular panoramas fascinates with many new trails. Since the region hosted the Enduro World Series (EWS), there are not only established flowlines but also also challenging enduro trails.

dolomitibikegalaxy.com

The sun spot of Italy: the trail network around Massa Marittima. Bike-crazy locals came together to form 180 km of the finest singletrack trails, which they regularly maintain.

thetrailbrothers.com

A true freeride paradise lies a few kilometers to the east. On Monte Amiata, the highest mountain in the south of Tuscany, we found sensational flow- and jump-lines!

amiatafreeridebikeressort.com



PEFC zertifiziert

Papier stammt aus
nachhaltig
bewirtschafteten
Wäldern und
kontrollierten Quellen

PEFC/04-31-1339

www.pefc.de

- 004 STEVENS Hamburg
- 006 Hand in hand
- 116 Research & Development
- 118 Quality Control
- 120 Premium Supplier

010 ROAD TECHNOLOGY**014 CUSTOM ROAD**

- 020 Comet Disc
- 021 Comet
- 022 Ventoux Disc
- 025 Ventoux
- 027 Xenon Disc
- 028 Xenon
- 029 Aspin

030 ROAD

- 034 Izoard Pro Disc
- 036 Izoard Disc
- 037 Aspin
- 038 Stelvio
- 039 San Remo

040 TRIATHLON

- 044 Volt Custom
- 045 Volt Ultegra

046 CYCLOCROSS

- 050 Super Prestige Di2
- 051 Super Prestige Force eTap AXS
- 052 Super Prestige 1x11
- 053 Super Prestige 2x11
- 056 Vapor 1x11
- 057 Vapor 2x11

058 GRAVEL

- 064 Prestige
- 066 Gavere
- 067 Tabor
- 068 Supreme Pro
- 069 Supreme

072 MTB TECHNOLOGY**074 XC CARBON**

- 077 Sonora XO
- 078 Sonora ES
- 079 Sonora

080 XC ALLOY

- 083 Colorado 401
- 084 Sentiero
- 085 Devil's Trail
- 088 Applebee
- 090 Taniwha
- 092 Tonga

094 JUNIOR SPORT

- 096 Team RC
- 098 Furious
- 101 Beat SL Disc
- 102 Beat SL

- 106 Santini SMS
- 107 Equipe
- 110 Racing Team
- 112 Casual Wear
- 114 Bags | Parts

- 122 Well Adjusted
- 123 Dealer & Service

The specifications in this catalogue are a brief list of the most important components. More specific details can be found on the web with the respective bike models.

IMPRINT

© 2020 STEVENS Vertriebs GmbH. Changes in construction, configuration and color, errata and mistakes reserved. Further current information, technical details and geometry tables on www.stevensbikes.com. Weights are size-dependant and are subject to slight variation of up to 5%. Use of texts and photographs from this catalogue and printing or copying is prohibited without written consent of STEVENS Vertriebs GmbH. 09/2020

Layout & Realization André Schadack, STEVENS Vertriebs GmbH / Annika Hiller, www.annikahiller.com // **Editorial team** Volker Dohrmann, STEVENS Vertriebs GmbH // **Text** Volker Dohrmann, Christian Allmendinger, Tobias Hatje, STEVENS Vertriebs GmbH // **Product Photography** Marc Autenrieth, marcautenrieth.de // **Inhouse Photography** Romanus Fuhrmann, romanusfuhrmann.com // **Action Photography** Markus Greber Photography, markusgreber.com, Torben Conrad, torbenconrad.com, Cor Vos, corvospro.com, Armin M. Küstenbrück, EGO-Promotion, Carlos Fernández Laser, carlos@carlosfernandez.de // **Print & Manufacture** Kunst- und Werbedruck, Bad Oeynhausen, www.kunst-undwerbedruck.de



STEVENS HAMBURG

FROM THE ELBE TO THE WORLD

STEVENS is a Hamburg brand and embodies the same virtues and characteristics of that of the long-existing Hanseatic city of Hamburg: cosmopolitan while down-to-earth, innovative but not over-the-top, progressive but proud of what has been achieved. Hamburg stands for understatedness, for cordiality (however subtle), for tolerance and honest friendship. Hamburg is shaped by its people and their liberal approach to life. We see ourselves as a bike brand that carries this Hanseatic spirit with our bikes, throughout Germany and beyond to 24 European countries.

MADE IN HAMBURG

What was once a manageable two-wheeler has become a highly complex and modern high-tech vehicle designed to meet a wide range of demands, budgets and requirements. From the first idea, to concept on paper, then to mobile prototype and lastly to the final coordination, many intricate steps must be taken that require the utmost in transparency and expertise. We count on our employees to contribute their experience, ideas, knowledge and wishes so that we can continuously improve the products in these small intricacies before it is finally tested extensively. All this is done in Hamburg, with the latest software, in our own test laboratories, with our own machinery and cutting-edge technology. We are proud of this, but also certain that our philosophy – **designed and engineered in Hamburg** – is the basis for STEVENS' success.

SHORT DISTANCES, FAST INPUT

All decision-makers, engineers, developers and designers at STEVENS live and work in the port city of Hamburg. Here we sit together every day, exchange ideas and evaluate input from the professionals who test our bikes to the limit on the road as well as off-road. In combination with the suggestions of STEVENS retailers and feedback from our customers, the evaluations of the in-house quality control and the assessment of our products by the trade press, our bikes are continuously being further developed to that next level. The production of most of the bikes is also moving closer to our home base: A large part is manufactured by Stevens Produktions GmbH, which is based in Bramsche, Lower Saxony. For STEVENS, producing regionally means contributing towards sustainability (e.g. through short delivery routes) and supporting the region.





HAND IN HAND

GERMAN LOCATION ADVANTAGE

For years, we have relied on implementing most production processes in Germany or in EU countries. Every second STEVENS bike is assembled in Germany, and our custom bike programme is completely implemented in Hamburg. We have another 40 percent of our bikes assembled in other European countries, in accordance with our quality guidelines and taking into account the latest standards in environmental protection, sustainability, fair wages and compliance with employee rights and occupational safety guidelines. We believe that quality and integrity will prevail in the long run, which is why we have our technicians continuously accompany all production steps.



ONLY THE BEST SUPPLIERS

As in the automotive industry, the intrinsic value of the bikes also depends on the quality of the suppliers. For years, STEVENS has had trusting relationships with many manufacturers, who both stand for the highest quality and also produce in Germany like us. These partnerships include, for example, Busch+Müller from Meinerzhagen in the Sauerland region who supplies us with their innovative and high-quality lighting systems. For tires, we have trust in Continental from Korbach and European bike tire market leader Schwalbe from Reichshof-Wehnrath near Cologne. For saddles, some come from Italy while many of our wheels are made by DT Swiss from Switzerland, one of the leading manufacturers of high-performance components for sports bikes.

SUCCESS THROUGH CONTINUITY

For years, STEVENS has relied on its built-up network of almost 600 specialist retailers with whom it has long-standing business relationships. The bicycle market is becoming more and more complex, the range of products on offer more diverse. With this said, we are absolutely certain that good customer service and customer loyalty can only be achieved through working with qualified specialist retailers. In addition, the continuous exchange with many loyal regular customers is becoming more and more intense. We also receive a steady yet wide range of feedback via our social media channels such as Facebook, Instagram, etc. STEVENS continuously ranks very high in surveys by trade journals in terms of brand preference in Germany. This not only makes us proud, but it also gives us a great feeling that we know the needs and requirements of the demanding German bicycle market quite well and that we are on the right track.





ROAD



2



1

DESIGN MEETS TECHNOLOGY

TECHNOLOGY THAT EXCITES

When buying a new road bike, you demand an excellent racing machine. One that is fast, lightweight, nimble, and elegant. One that is tough and reliable over thousands of miles. A piece of state-of-the-art technology. Those who buy a STEVENS road bike will get all that. They also get: The passion that engineers and designers put into their work. The incorruptibility and experience of test riders and professional athletes. The skill and precision of our mechanics. All this serves as the basis for you having fun while generating speed on skinny tires.

1

POWER CENTER

The bottom bracket area is essential to convert pedaling force into forward motion - directly and without loss, when carbon layers are applied so consistently as with the Xenon Disc. In the rear, there is even enough room to mount 28 mm wide tires.

2

IT'S IN THE HEAD

STEVENS engineers were only pleased when the Xenon Disc frame was finally lighter and at the same time stiffer to always shine with max efficiency and steering precision even when ridden by the most powerful athletes. Its sleek tapered steerer tube is not only a thing of beauty, but offers less wind resistance which counts when the heat is on and you're going for the finish line.

3

COMFORT GUARANTEED

Sleek seat stays are not only elegant, but contribute to the Xenon's noticeable comfort by adding vertical compliance. You'll quickly appreciate this most when your ride is longer or harder than planned, which basically means all the time.

4

FINE TUNING

Comfort enhancing 28 mm tyres need space - and the agility of a road bike benefits immensely from short chainstays. This discreetly "deformed" seat tube takes this into account and looks outrageously good at the same time. And again and again, the details as a whole shape the picture.

3

4



TECHNOLOGY

HIGH-TECH OFFENSIVE

For our carbon and aluminium race machines, STEVENS engineers were allowed to go all-out and convert all their know-how into superlatives on skinny tires. Here the featherweight Comet frame, the comfortable Ventoux and the bang-for-buck sensation Aspin can be turned into personalized dream machines through our Custom Program. This is where a huge selection of components really comes in handy. Here the new Xenon Disc continues the trend toward disc brakes on road bikes. Also our entry level racers prove that Aluminium road bikes are far from dead. Now, STEVENS customers can go all-out on their carbon and aluminium race machines to put their lust for speed into action.



1

VARIETY OFFERED

In our serial road bikes, we completely rely on drivetrain components from Shimano. But you can choose to be different – by turning away from the mainstream and instead selecting Sram components through the Custom Program. This would also put you on carbon cranks, instead of the aluminium ones supplied by Shimano. Furthermore, you can choose between cable-operated or wireless, remote controlled shifting. The only option not yet available is the "1x crank", but 12 sprockets are ...

2

FUNCTION DESIGNED

After you opt for the Comet, Ventoux, Xenon or Aspin frame, the decisions still to make are far from over. The STEVENS Custom Road Program offers you an almost unlimited selection – such as either light-weight climbing wheels or special aero wheels. Please continue...

3

ALUMINIUM REVITALISED

Even though carbon has become standard in high-quality road bikes, aluminium is far from obsolete – especially when it's crafted in smart fashion. The Aspin's tube set boasts up to three different wall thicknesses ("triple butted") to provide reinforcement in just the right places while delivering the most possible weight savings. This best prepares both rider and machine for legendary pass descents.

4

WISHES FULFILLED

Once you have made your choice between Comet, Ventoux, Xenon or Aspin frames, it is by no means over. In the STEVENS Custom Road programme, you have almost unlimited choice - when it comes to wheels, for example, between featherweight climbing experts or such aero specialists. Please turn the page ...





CUSTOM ROAD

COMET DISC

COMET

VENTOUX DISC

VENTOUX

XENON DISC

XENON

ASPIN

What was the tailor-made suit in the last century is today the individually assembled racing bike. It is a collector's item and status symbol, a high-tech vehicle and an expression of passion for every racing cyclist. A road bike has to meet your requirements down to the last detail – after all, you invest a lot of money in your dream bike. But that doesn't always come off the rack, which is why STEVENS has been successfully offering their custom programme since 2003. Online at stevensbikes.de you can fully assemble your dream bike out of countless options to perfectly reflect your unique personal preferences. Choose from various aluminium or carbon frames, top component groups of Shimano and SRAM, numerous brake, drivetrain and wheel options, as well as stem and handlebar variations. While configuration is possible online, ordering and delivery is carried out by STEVENS specialist retailers.

© 2006 The Authors

BUILD YOUR OWN DREAMBIKE

Custom built race machines for riders who prefer to select the parts for their dream bike on their own. You devise your personal road bike from a gigantic toolbox of components with theoretically 200 million options. And we build it – at the STEVENS manufactory where our most experienced mechanics bring in all their skills and passion for high-quality cycling

technology. Simply try the online configurator which shows you the way to your new dream bike in ten consecutive steps. Or select several options with your STEVENS dealer and benefit from his or her advice and recommendations. Start right now!



3 STEPS TO YOUR DREAM BIKE

WWW.STEVENSBIKES.DE/CUSTOM

1 CHOOSE FRAME



2 SET COMPONENT GROUP



3 SELECT FURTHER OPTIONS



WE HAND-CRAFT YOUR DREAM BIKE AND YOU CAN RECEIVE IT AT YOUR DEALER'S SHOP



CUSTOM

VENTOUX DISC

FEATURES //

1. ADDED VALUE

With the feather-light Ventoux Disc frame, frame geometry and carbon fibre technology revolve around the goal of racing more relaxed on long distances. Thus, more comfort and more high-tech lead to more riding pleasure.

2. PERFORMANCE

Steering precision and drive efficiency at the highest level are ensured by the stiff press-fit bottom bracket, the elegant, laterally stiff 1.5" full carbon fork and QR12 thru-axes both front and rear.

3. ELEGANCE

The gearing option "Sram RED eTap AXS" helps the custom-made racer to achieve a maximum of cleanliness, because it has no shift cables.

4. SPEED

Especially when choosing their wheels, STEVENS Custom buyers can tailor their new bike to their own ambitions - and here the motto was clearly: "I want it faster!"



EXPERIENCE COMFORT



These extra slim seatstays and a purposefully compliant seatpost provide noticeable riding comfort not only on the rough asphalt of French country roads - especially if you click on the option "28mm tyres" when assembling your custom racer and ride it with appropriately low tyre pressure. "Comfortable" does not mean "soft", because the other tube cross-sections are specifically designed for maximum stiffness and efficiency.



INSTALL STIFFNESS



This inconspicuous lettering indicates a speciality of the Ventoux Disc frame: In order to be able to handle the loads that occur even better, an internal stiffening rib divides the respective frame or fork tube into two chambers. In view of the minimal additional weight, the gain in stiffness and stability is enormous.

COMET DISC

- › High-end 895 grams disc frame w/ smart details
- › High stiffness AND comfort values
- › Innovative cable routing for all possible drivetrain options plus QR12 thru-axles front + rear
- › Custom configuration with wide range of sizes
- › Gross vehicle weight: 115 kg!

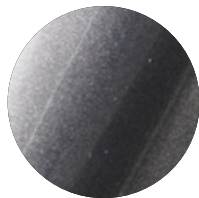
FRAMEKIT //

FRAME	895 g (56 cm) Carbon SL Fiber
FORK	345 g STEVENS Full Carbon SL
HEADSET	STEVENS Race
SIZES	50, 52, 54, 56, 58, 60 cm
COLOR	Phantom Grey



RoadBIKE 08/2019

The Comet Disc is a safe investment with no weaknesses. The frame impresses with its safe straight-line stability and precise cornering ability.



Custom bike incl. special options.
Further details see stevensbikes.de/custom

COMET

- › High-end 800 grams frame w/ smart details
- › Perfect combination of high STW ratio plus perceivably more comfort
- › Innovative cable routing for all possible drivetrain configurations plus metal chainstay protection
- › Custom configuration with wide range of sizes
- › Gross vehicle weight: 115 kg!

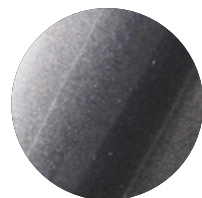
FRAMEKIT //

FRAME	796 g (58 cm) Carbon SL Fiber
FORK	288 g STEVENS Full Carbon SL
HEADSET	STEVENS Race
SIZES	50, 52, 54, 56, 58, 60 cm
COLOR	Phantom Grey



TOUR 03/2018

Stevens impressed with a 6.5-Kilo racer for less than 4,000 Euros. The sensational weight and its moderate geometry make it a great bike for extended rides.



Custom bike incl. special options.
Further details see stevensbikes.de/custom

VENTOUX DISC

- › Modern, lightweight and comfortable disc frame
- › Internal brake cable routing – also through fork
- › Stiff pressfit bottom bracket, Flatmount brake mounts, QR12 thru-axle
- › Elegant 1.5" full carbon fork w/ high lateral stiffness and QR12 thru-axle
- › Maximum tire clearance up to 28 mm!

FRAMEKIT //

FRAME	995 g (56 cm) Carbon SL HMF
FORK	396 g STEVENS Full Carbon SL HMF
HEADSET	STEVENS Race
SIZES	50, 52, 54, 56, 58, 60, 62 cm
COLORS	Carrara White Slate Grey



TOUR 12/2019

The STEVENS Ventoux Disc makes it a breeze to race. The relatively light frame is extremely stable and can be individually configured via the custom program.



COLORS



► Slate Grey



► Carrara White



Custom bike incl. special options.
Further details see stevensbikes.de/custom

CLASSIC BRAKES



Many Tour de France pros have already converted to hydraulic disc brakes. But this certainly does not mean that good old rim brakes belong in the museum any time yet. Especially when they are designed as compact and stiff as these powerful calipers from Shimano's Ultegra groupset. For weight weenies, there is simply no alternative.



EXECUTE ORDER



At least once in a lifetime, every rider of a STEVENS Ventoux should climb the namesake "White Giant of Provence" by their own effort. This is why its super-stiff carbon frame and the 1.5" tapered steerer fork with 12-mm thru-axle are made for direct power transfer and high steering precision. These qualities especially come in handy when you chose not to get into the team car at the top but instead opt to tackle the well-earned high-speed descent.

VENTOUX

- › Innovative, lightweight and comfortable frame
- › IF Design award-winner: "Distinctive silhouette and design"
- › Extra-stiff pressfit bottom bracket
- › Full carbon fork w/ tapered steerer and double chamber technology
- › Maximum tire clearance up to 28 mm!

FRAMEKIT //

FRAME	976 g (56 cm) Carbon SL HMF
FORK	340 g STEVENS Full Carbon SL HMF
HEADSET	STEVENS Race
SIZES	50, 52, 54, 56, 58, 60, 62 cm
COLOR	Slate Grey



TOUR 03/2018

For those who like the moderately sporty seating position, the Ventoux is a winner. It is extremely stable, relatively light and very well spec'd.



Custom bike incl. special options.
Further details see stevensbikes.de/custom

SPORTS CERTIFICATE



The final proof of the qualities of our Xenon frame is this small sticker on the seat tube - namely the admission to the races organised by the UCI, the world cycling federation, up to the World Tour. By the way, most professional cyclists now also rely on disc brakes and their reliable performance at all times.



FITNESS PROGRAMME



The narrow but tall chainstays combined with voluminous bottom bracket area make sure every single pedal stroke is being converted directly into forward motion – without any power loss due to distortion. As an extra cautionary measure, we added a "chain catcher" near the big chain ring to protect the frame's carbon fibers from damage in case of an accidentally dropped chain.

XENON DISC

- › Lightweight high-performance disc frame w/ improved stiffness-to-weight ratio
- › Sleek head tube for better aerodynamics AND high steering precision
- › Stiff bottom bracket section, Flatmount brake mounts, carbon dropouts
- › Smart cable routing with universal inserts for Di2 or mechanical
- › Maximum tire clearance up to 28 mm!

FRAMEKIT //

FRAME	990 g (56 cm) Carbon SL Fiber
FORK	385 g STEVENS Full Carbon SL
HEADSET	STEVENS Race
SIZES	50, 52, 54, 56, 58, 60 cm
COLOR	Moonlight Blue



Custom bike incl. special options.
Further details see stevensbikes.de/custom

XENON

- › Lightweight high-performance frame w/ improved stiffness-to-weight ratio
- › Sleek head tube for better aerodynamics AND high steering precision
- › Stiff bottom bracket section, carbon dropouts
- › Smart cable routing with universal inserts for Di2 or mechanical
- › Maximum tire clearance up to 28 mm!

FRAMEKIT //

FRAME	925 g (56 cm) Carbon SL Fiber
FORK	298 g STEVENS Full Carbon SL
HEADSET	STEVENS Race
SIZES	50, 52, 54, 56, 58, 60 cm
COLOR	Carrara White

RoadBIKE

RoadBIKE 05/2020

The very light frame set impresses with its lively and agile character and good comfort qualities - it rides wonderfully light-footed and lively.



Custom bike incl. special options.
Further details see stevensbikes.de/custom

ASPIN

- › Lightweight frame made of triple butted aluminium 7005
- › Lightweight full carbon fork with tapered steerer
- › Internal cable routing
- › Stiffness and comfort due to tapered seat tube and pressfit bottom bracket
- › 8 finely graduated frame sizes

FRAMEKIT //

FRAME	1.330 g (56 cm) Aluminium SL 7005 TB
FORK	375 g STEVENS Full Carbon SL
HEADSET	STEVENS Race
SIZES	50, 52, 54, 56, 58, 60, 62, 64 cm
COLOR	Stealth Black



Custom bike incl. special options.
Further details see stevensbikes.de/custom





ROAD



IZOARD PRO DISC
IZOARD DISC
ASPIN

STELVIO
SAN REMO

What was the tailor-made suit in the last century is today the individually assembled racing bike. It is a collector's item and status symbol, a high-tech vehicle and an expression of passion for every racing cyclist. A road bike has to meet your requirements down to the last detail – after all, you invest a lot of money in your dream bike. But that doesn't always come off the rack, which is why STEVENS has been successfully offering their custom programme since 2003. Online at stevensbikes.de you can fully assemble your dream bike out of countless options to perfectly reflect your unique personal preferences. Choose from various aluminium or carbon frames, top component groups of Shimano and SRAM, numerous brake, drivetrain and wheel options, as well as stem and handlebar variations. While configuration is possible online, ordering and delivery is carried out by STEVENS specialist retailers.

ROAD

IZOARD PRO DISC

FEATURES //

1. SPOT-ON REINFORCEMENTS

The Izoard Pro frame and fork are well prepared to be combined with the most powerful disc brakes.

2. SUPERB BRAKING

Flatmount discs with 160mm diameter stop on a dime and handle demanding downhills with ease.

3. PRECISE SHIFTING

The semi-compact Ultegra group reliably provides the right gear in any situation one can encounter.

4. FAST ROLLING

The combination of Fulcrum Racing disc wheels and Continental Grand Prix 25mm tires is made purely for speed.



COMFORTABLY COMPLIANT



The Oxygen Scorpio seatpost lives up to its "Comfort SL" distinction – it noticeably reduces road chatter. It recently had to prove itself on the cobble sections of the 2018 Tour of Flanders where STEVENS' test riders took the Izoard Pro Disc prototype for a ride in the cyclotourist edition of this legendary WorldTour event.



FULL THROTTLE AHEAD



This bottom bracket area is all about forward motion. The generously dimensioned press fit bottom bracket, as well as the voluminous intersection of down tube, seat tube and chain stays, add to its highest lateral stiffness. This guarantees for direct power transfer from the pedal onto the road every time you want to go "full throttle".

IZOARD PRO DISC

- › Performance oriented carbon disc frame & fork w/ QR12 thru-axles
- › Stable but responsive steering characteristics – perfect for conquering alpine passes
- › Complete Shimano Ultegra 2x11-speed semi-compact drivetrain
- › Powerful Shimano Ultegra Flatmount disc brakes
- › Fulcrum Racing 600 DB wheelset

WEIGHT	7,9 kg
SIZES	50, 52, 54, 56, 58, 60, 62 cm
FRAME	Carbon SL Fiber
COLOR	Stealth Black Carrara White

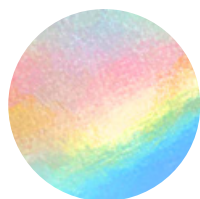


RennRad 06/2019

The STEVENS Izoard Pro Disc offers agility and a comfortable ride with direct handling and a sporty seating position. Good choice of specs, fair price.

Fork	STEVENS Full Carbon SL
Wheels	Fulcrum Racing 600 DB
Tires	Continental Grand Prix 25-622 foldable
Brakes	Shimano Ultegra, 160/160 mm
Derailleurs	Shimano Ultegra, 11-speed Ultegra
Crankset	Shimano Ultegra
Gears	52-36 T (f) 11-32 T (r)
Cockpit	Oxygen Scorpio Aero Scorpio Road
Saddle S.post	Oxygen Triton Scorpio Carbon



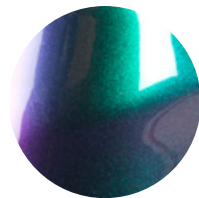


IZOARD DISC

- › Pro-level "disc only" carbon frame
- › Complete Shimano 105 groupset w/ 2x11-speed semi-compact drivetrain and hydraulic disc brakes
- › Pressfit bottom bracket and internal cable routing
- › Full carbon fork with tapered steerer
- › Lightweight Fulcrum disc wheelset plus proven Continental Grand Sport Race tires (25 mm)

WEIGHT	8,5 kg
SIZES	50, 52, 54, 56, 58, 60, 62 cm
FRAME	Carbon SL Fiber
COLOR	Python

Fork	STEVENS Full Carbon SL
Wheels	Fulcrum Racing 900 DB
Tires	Continental Grand Sport Race SL 25-622 foldable
Brakes	Shimano 105, 160/160 mm
Deraillleurs	Shimano 105, 11-speed 105
Crankset	Shimano 105
Gears	52-36 T (f) 11-32 T (r)
Cockpit	Oxygen Scorpo Aero Scorpo Road
Saddle S.post	Oxygen Cyrius Scorpo Road



ASPIN

- › Lightweight triple butted aluminium frame
- › Lightweight full carbon fork with tapered steerer
- › Complete Shimano Ultegra 2x11-spd compact groupset
- › Fulcrum Racing 600 wheelset w/ Continental Grand Prix folding tires
- › Stiffness and comfort due to tapered seat tube and pressfit bottom bracket

WEIGHT	7,9 kg
SIZES	50, 52, 54, 56, 58, 60, 62, 64 cm
FRAME	Aluminium SL 7005 TB
COLOR	Stealth Black



aktiv Radfahren 05/2019

With its classic and very light aluminium frame, the bike impresses with balance and riding stability. Price, equipment and weight are on a very good level.

Fork	STEVENS Full Carbon SL
Wheels	Fulcrum Racing 600
Tires	Continental Grand Prix 25-622 foldable
Brakes	Shimano Ultegra
Derailleurs	Shimano Ultegra, 11-speed Ultegra
Crankset	Shimano Ultegra
Gears	50-34 T (f) 11-32 T (r)
Cockpit	Oxygen Scorpo Aero Scorpo Road
Saddle S.post	Oxygen Cyrius Scorpo Road



STELVIO

- › Weight-optimized triple butted aluminium frame w/ STEVENS race geometry (9 frame sizes)
- › Stiffness and comfort due to tapered seat tube
- › Carbon fork with tapered steerer
- › Complete Shimano 105 11-speed compact groupset
- › Fulcrum Racing 900 wheelset plus Continental folding tires

WEIGHT	8,5 kg
SIZES	44, 47, 50, 52, 54, 56, 58, 60, 62 cm
FRAME	Aluminium SL 6061 TB
COLOR	Stealth Black



RoadBIKE 07/2018

The STEVENS scores as a flawless do-it-all bike and shows no weakness: Nimble, safe, versatile – best in test among brick-and-mortar brands.

Fork	STEVENS Full Carbon SL
Wheels	Fulcrum Racing 900
Tires	Continental Grand Sport Race SL 25-622 foldable
Brakes	Shimano 105
Deraillleurs	Shimano 105, 11-speed 105
Crankset	Shimano 105
Gears	50-34 T (f) 11-32 T (r)
Cockpit	Oxygen Scorpio Aero Scorpio Road
Saddle S.post	Oxygen Cyrius Scorpio Road



SAN REMO

- › Triple butted aluminium frame w/ perfect directional stability – sizes 44-60 cm
- › Stiffness and comfort due to tapered seat tube
- › Carbon fork w/ tapered aluminium steerer tube
- › Proven Continental Grand Sport Race tires
- › Shimano Tiagra 2x10-speed compact drivetrain

WEIGHT	9,3 kg
SIZES	44, 47, 50, 52, 54, 56, 58, 60 cm
FRAME	Aluminium 6061 TB
COLOR	Stealth Black



RoadBIKE 08/2020

The lightest bike in the test shines with agile, sporty handling, top propulsion and very good equipment.

Fork	STEVENS Carbon Pro-Blade
Wheels	Shimano Tiagra Oxygen RM-R17
Tires	Continental Grand Sport Race SL 25-622 foldable
Brakes	Shimano Tiagra
Derailleurs	Shimano Tiagra, 10-speed Tiagra
Crankset	Shimano Tiagra
Gears	50-34 T (f) 11-32 T (r)
Cockpit	Oxygen Scorpio Aero Driver Road
Saddle S.post	Oxygen Cyrius Driver Road







TRIATHLON



VOLT

The STEVENS triathlon machine Volt is a rocket on the tarmac. Countless hours in the wind tunnel, intensive tinkering with the cockpit, discussions with engineers about frame stiffness and seating positions. Every last detail of this bike is finely tuned to extract the last few seconds out of the merciless battle against the clock – this special machine is trimmed one hundred percent for top speed. The tube profiles are optimized for best aerodynamics. Even the brakes are hidden in the fork and behind the bottom bracket on the chainstays, so that they do not offer the wind any exposed surface to slow this machine down. The fork and head tube are fitted with millimeter precision to reduce wind resistance and gives the appearance that the whole setup is one single piece. This streamlined image is rounded off by the aero trim on the handlebar, which also functions as a drinking vessel with integrated straw. Now it's all up to your calves...

TRIATHLON

VOLT

FEATURES //

1. OPTIMIZED AERODYNAMICS

All tube shapes are designed for lowest possible wind resistance. The fork hugs the frame, brakes are well-hidden from headwind.

2. SEAMLESS INTEGRATION

Instead of sticking energy bars to the top tube and tucking bottles behind the saddle, the Volt rider has easy access to food box and hydration system.

3. PERSONALIZED

Our triathlon geometry with more stack and less reach is perfectly complemented by the Profile Design cockpit that can be precisely adjusted to the rider's needs and wishes.

4. FREE CHOICE

Triathletes and time trial specialists opt for the STEVENS Custom Program when creating their dream bikes.



ARROW FAST



At first glance, it may only look like aero fairings for head tube and stem, but there's more to it. One such extra detail is a handy container for holding 0.75 liters (26oz.) of energy drink, and includes a hose with drinking valve fixed via magnet for optimal reach. When you're flying over the legendary IRONMAN Hawaii's scorching hot tarmac, you'll quickly come to appreciate this level of attention to detail.



CENTRAL INTEGRATION



The chainstays behind the bottom bracket on the Volt are very voluminous – for a reason. We smartly use this space to neatly house the TRP rear brake for a reduction in wind resistance. At first glance, you'll see we've nicely achieved this goal.

VOLT

- › Successful Triathlon model with many cockpit fitting options
- › Integrated top tube foodbox and drinking system
- › Hidden aero brakes
- › Specific triathlon geometry
- › Available as custom bike, framekit or production bike

FRAMEKIT //

FRAME	1.490 g (M) Carbon SL HMF
FORK	450 g STEVENS Full Carbon SL HMF
HEADSET	STEVENS Race
SIZES	XS, S, M, L, XL
COLORS	Deep Violet, Carbon Fire-Red (S, M, L)



Triathlon 02/2018

A bike for triathletes who demand integrated, yet easy-to-install solutions. In terms of adjustability, the Volt excels. On the road it's a well-balanced machine with good agility. A nimble bike for a fair price.



Custom bike incl. special options.
Further details see stevensbikes.de/custom

VOLT

ULTEGRA

- Successful Triathlon model with many cockpit fitting options
- Integrated top tube foodbox and drinking system
- Hidden aero brakes
- Specific triathlon geometry
- Shimano Ultegra 2x11-spd drivetrain

WEIGHT 9,9 kg

SIZES XS, S, M, L, XL

FRAME Carbon SL HMF

COLOR Deep Violet

Fork STEVENS Full Carbon SL HMF
Wheels Fulcrum Racing 600 RB
Tires Continental Grand Prix 25-622 foldable
Brakes TRP TTV09-F | TTV09-F Direct Mount
Derailleurs Shimano Ultegra Shadow, 11-speed | Ultegra
Crankset Shimano Ultegra
Gears 53-39 T (f) | 11-25 T (r)
Cockpit Profile Design Aeria Ultimate
Saddle | S.post Oxygen Triton | STEVENS Carbon







CYCLOCROSS

SUPER PRESTIGE DI2

SUPER PRESTIGE FORCE ETAP AXS

SUPER PRESTIGE 1x11

SUPER PRESTIGE 2x11

VAPOR 1x11

VAPOR 2x11

Some like to get dirty. The robust STEVENS Cyclocross bikes for gravel roads, muddy fields and rain-soaked forest trails have made history: Numerous national championships, European championships and a total of 17 world championships have been won on STEVENS cross bikes. We are proud that we have been able to give cyclocross a new boost in Germany by sponsoring race series, but most of all with our bikes, which even inspire the world's top cross riders. Meanwhile, in the Benelux region, which is the world's center of cyclocross, you can be sure that no cyclocross race takes place without a STEVENS bike racing along the course and usually finishing in front. The extremely light and yet very robust frames of the Super Prestige series are the basis for their success, in addition to the very compact, agile but also stable geometry. Whether with SRAM's 1x12 wireless drivetrain or Shimano's 2x11 electronic shifting – everything is possible.

CYCLOCROSS

SUPER PRESTIGE FORCE ETAP AXS

FEATURES //

1. MADE STIFF

The ultra-light carbon frame (< 1000 grams!) and carbon fork easily withstand brute forces caused by Flatmount disc brakes and powerful acceleration on the 'cross circus.

2. LEFT OUT

Instead of a front derailleur, the new Super Prestige Force eTap AXS features a clever chain guide to prevent annoying stops caused by a jammed chain.

3. RADIO TRAFFIC

Instead of using shift cables, this rear derailleur receives its commands via wireless radio transmission - and translates them into highly accurate gear changes.

4. MR. VERSATILE

With its tiny round knobs, the Schwalbe X-One Allround is exactly what its name suggests: incredibly fast on any type of terrain.



SPECIAL FORCE



"Force" is written on it, high-strength carbon fibres are inside this noble crank set. Always ready to pass on your muscle power from the solo chainring to one of the 12 rear sprockets - and then to translate it into arrow-fast locomotion on both smooth and rough slopes.



QUALITY SEAL



The most important cyclocross racing series after the UCI World Cup is called "Superprestige" - so it goes without saying that our top model of the same name has the blessing of the world cycling federation. And that it was able to win a great many national and international races.

SUPER PRESTIGE DI2

- › Stiff AND vertically compliant carbon frame (1000 grams!) w/ QR12 thru-axle
- › "World Champion" geometry and frame details
- › Shimano Ultegra Di2 Cyclocross/RX drivetrain
- › Integrated chainguide for single/double cranks
- › Ultra-fast DT Swiss C1800 Spline wheelset and Schwalbe X-One Allround Evolution tires

WEIGHT	8,1 kg
SIZES	50, 52, 54, 56, 58, 60 cm
FRAME	Carbon SL Fiber
COLOR	Galaxy Black



Bike Rumor 12/2018

Those who don't win races with the STEVENS Super Prestige need to train more. The Super Prestige willingly rides at higher speeds - all the way to the rainbow jersey.

Fork	STEVENS Full Carbon SL
Wheels	DT Swiss C 1800 Spline
Tires	Schwalbe X-One Allround Evolution 33-622 foldable
Brakes	Shimano Ultegra, 160/160 mm
Deraillleurs	Shimano Ultegra RX Di2 Shadow+, 11-speed Ultegra Di2
Crankset	Shimano Ultegra CX
Gears	46-36 T (f) 11-28 T (r)
Cockpit	Oxygen Scorpo Aero Scorpo Road
Saddle S.post	Oxygen Triton Scorpo Carbon Road



SUPER PRESTIGE FORCE

ETAP AXS

- › Stiff AND vertically compliant carbon frame (1000 grams!) w/ QR12 thru-axle
- › "World Champion" geometry and frame details
- › New Sram Force eTap AXS 12-speed drivetrain
- › Integrated chainguide for single/double cranks
- › Ultra-fast DT Swiss C1800 Spline wheelset and Schwalbe X-One Allround Evolution tires

WEIGHT	8,0 kg
SIZES	50, 52, 54, 56, 58, 60 cm
FRAME	Carbon SL Fiber
COLOR	Galaxy Black

Fork	STEVENS Full Carbon SL
Wheels	DT Swiss C 1800 Spline
Tires	Schwalbe X-One Allround Evolution 33-622 foldable
Brakes	Sram Force eTap AXS, 160/160 mm
Derailleurs	Sram Force eTap AXS, 12-speed -
Crankset	SRAM Force 1 DUB
Gears	38 T (f) 10-33 T (r)
Cockpit	Oxygen Scorpo Aero Scorpo Road
Saddle S.post	Oxygen Triton Scorpo Carbon Road

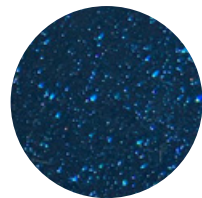


SUPER PRESTIGE 1x11

- › Stiff AND vertically compliant carbon frame (1000 grams!) w/ QR12 thru-axle
- › "World Champion" geometry and frame details
- › Shimano GRX 1x11-spd drivetrain
- › Easton carbon crank plus integrated chainguide
- › Ultra-fast DT Swiss C1800 Spline wheelset and Schwalbe X-One Allround Evolution tires

WEIGHT	8,0 kg
SIZES	50, 52, 54, 56, 58, 60 cm
FRAME	Carbon SL Fiber
COLOR	Polar Blue

Fork	STEVENS Full Carbon SL
Wheels	DT Swiss C 1800 Spline
Tires	Schwalbe X-One Allround Evolution 33-622 foldable
Brakes	Shimano GRX 810, 160/160 mm
Deraileurs	Shimano GXR 810, 11-speed -
Crankset	Easton EC90 SL Carbon
Gears	40 T (f) 11-34 T (r)
Cockpit	Oxygen Scorpo Aero Scorpo Road
Saddle S.post	Oxygen Triton Scorpo Carbon Road



SUPER PRESTIGE 2x11

- Stiff AND vertically compliant carbon frame (1000 grams!) w/ QR12 thru-axle
- "World Champion" geometry and frame details
- Shimano Ultegra Cyclocross/RX 2x11-spd drivetrain
- Integrated chainguide for single/double cranks
- Ultra-fast DT Swiss C1800 Spline wheelset and Schwalbe X-One Allround Evolution tires

WEIGHT	8,2 kg
SIZES	50, 52, 54, 56, 58, 60 cm
FRAME	Carbon SL Fiber
COLOR	Carrara White



aktiv Radfahren 11-12/2018

Visually exciting, technically a delicacy and a true wonder of curves - the Super Prestige brings everything that makes for fun.

Fork	STEVENS Full Carbon SL
Wheels	DT Swiss C 1800 Spline
Tires	Schwalbe X-One Allround Evolution 33-622 foldable
Brakes	Shimano Ultegra, 160/160 mm
Derailleurs	Shimano Ultegra RX Shadow+, 11-speed Ultegra
Crankset	Shimano Ultegra CX
Gears	46-36 T (f) 11-28 T (r)
Cockpit	Oxygen Scorpio Aero Scorpio Road
Saddle S.post	Oxygen Triton Scorpio Carbon Road



CYCLOCROSS

VAPOR 1x11

FEATURES //

1. LIGHT ALLOY IN ITS BEST FOR

The multi-coloured iridescent aluminium frame of the Vapor 1x11 incorporates all the know-how of cyclocross market leader STEVENS.

2. ONE IS ENOUGH

We're talking about the 1x (single) chainring on the Shimano crankset. Its 40-tooth ring combined with 11-34 tooth cassette are ready for any off-road challenge.

3. UNDER 9

Thanks to top-shelf components such as a full carbon fork, the scale stops right at the 8.8 kg mark (without pedals).

4. FASTER AND SAFER

With the Schwalbe X-One Allround tires you can always step on the gas, on- and off-road. While flatmount disc brakes always keep you in control.



BEST PREPARED



Its 1.5" tapered steerer, Flatmount brake interface and stiff QR12 thru-axle prepare the full carbon fork of the Vapor 1x11 for the most violent braking manoeuvres. And thanks to threaded eyelets on the inside of the fork legs you can also attach a mudguard for riding in all weather conditions.



SIMPLE DETAIL



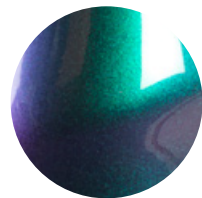
Even though the new Vapor 1x11 only needs a single chainring, this little chain guide can make a difference in extreme off-road situations – the difference between having to get off the bike losing valuable seconds and keeping on racing without slowing down

VAPOR 1x11

- › Innovative aluminium cyclocross bike w/ Flatmount disc mounts & QR12 thru-axes front and rear
- › Lightweight full carbon fork w/ fender mounts
- › Shimano GRX 1x11-speed cyclocross drivetrain
- › Shimano GRX hydraulic disc brakes
- › Lightweight Fulcrum Racing wheelset plus fast Schwalbe X-One Allround tires

WEIGHT	8,8 kg
SIZES	50, 52, 54, 56, 58, 60, 62 cm
FRAME	Aluminium SL 7005 TB
COLOR	Python

Fork	STEVENS Full Carbon SL HMF
Wheels	Fulcrum Racing 600 DB DRP
Tires	Schwalbe X-One Allround 33-622 foldable
Brakes	Shimano GRX 810, 160/160 mm
Deraillleurs	Shimano GRX 810, 11-speed -
Crankset	Shimano GRX 810
Gears	40 T (f) 11-34 T (r)
Cockpit	Oxygen Scorpo Aero Scorpo Road
Saddle S.post	Oxygen Triton Scorpo Road



VAPOR 2x11

- › Innovative aluminium cyclocross bike w/ Flatmount disc mounts & QR12 thru-axes front and rear
- › Lightweight full carbon fork w/ fender mounts
- › Shimano GRX 2x11-speed cyclocross drivetrain
- › Shimano GRX hydraulic disc brakes
- › Lightweight Fulcrum Racing wheelset plus fast Schwalbe X-One Allround tires

WEIGHT	9,0 kg
SIZES	50, 52, 54, 56, 58, 60, 62 cm
FRAME	Aluminium SL 7005 TB
COLOR	Foggy Grey



TOUR 01/2019

The STEVENS Vapor is just the right bike for racers who also consider a 'cross bike to be perfect second bike for winter and everyday riding.

Fork	STEVENS Full Carbon SL HMF
Wheels	Fulcrum Racing 600 DB DRP
Tires	Schwalbe X-One Allround 33-622 foldable
Brakes	Shimano GRX 810, 160/160 mm
Derailleurs	Shimano GRX 810, 11-speed Ultegra
Crankset	Shimano Ultegra CX
Gears	46-36 T (f) 11-32 T (r)
Cockpit	Oxygen Scorpo Aero Scorpo Road
Saddle S.post	Oxygen Triton Scorpo Road







GRAVEL

PRESTIGE
GAVERE
TABOR

SUPREME PRO
SUPREME

In hardly any other bike category outside of e-bikes is there so much movement as with gravel bikes. And this is where STEVENS has an enormous advantage, because only a few manufacturers have been able to accumulate so much extensive expertise in the cyclocross area and drive its development forward as STEVENS. For the 2021 season, a completely new gravel trio is now rolling to the start: Prestige, Gavere and Tabor. All three are based on aluminium frames designed for off-road use which, compared to their predecessors, have a longer wheelbase for smoother handling, a more compact cockpit and 40 mm wide tires as standard. In addition, the large number of cleverly placed threaded eyelets on the fork and frame allow the most diverse pannier options to be attached quickly and securely – a requirement for all bike-packing adventures. Still in the programme: Supreme and Supreme Pro as declared favorites of sporty year-round commuters. These bikes are robust, fast and safe in all weather conditions as they come equipped with disc brakes, integrated hub dynamo, bright lighting system and full mudguards.

GRAVEL

PRESTIGE

FEATURES //

1. GRAVEL & MORE

The new Prestige has less "cyclocross" and more "gravel" - this applies especially to the frame geometry with a longer wheelbase, more foot room and the seat post without offset to the rear.

2. COMFORT & CONTROL

On gravel roads and forest tracks at the latest, shorter stems and handlebars with shorter reach and more flare make themselves pleasantly noticeable.

3. SHIFTING & MANAGING

The finest - thanks to the finely graduated, super-precise GRX gears and hydraulic Flatmount disc brakes from the same Shimano group.

4. SPEED & FUN

The combination of fast, robust Fulcrum wheels and enormously versatile Schwalbe G-One Bite 40mm tyres pushes speed and riding pleasure to the extreme.



PROVEN RECIPE



The STEVENS S-Lite Aluminium fork is something special: made from a single forged part, stiffened with a 12mm thru-axle for precise handling and perfect brake alignment, supplemented by bike-packing compatible eyelets...



NEW CONCEPT



The cyclocross specialists from Hamburg can also do differently: the longer top tube of the 2021 Gravel racers soothes the handling on demanding off-road trails as well as on long-distance routes. To compensate, the stems are shorter for a balanced and comfortable seating position.

MANAGEMENT POWER



The GRX rear derailleur brings the Shimano qualities to the point: perfect gear changes under all imaginable riding conditions. Tip: before leaving the tarmac road, quickly move the small lever to "On" to avoid unintentional chain slapping.



HEAD SAKE



The 1.5" tapered head tube gives the Prestige & Co. chassis the desired stiffness and steering precision. And with so much tyre clearance (even at the rear!), you can either fit full-sized mudguards for bad weather use - or 45mm tyres for even more safety and comfort on rough roads.

FULL PROGRAMME



A wide variety of bike-packing bags can be attached to such a slim gravel racer - whether, as here, from market leader Ortlieb or other suppliers. And the most incredible adventures on narrow studded tyres are already possible.



FRONT LOADER



For such innovative packing options, we are particularly happy to modify our forks: the brand new "Fork-Pack" duo from Ortlieb can be hooked into the fork-mounted "Quick-Lock S-Adapter" with one hand movement each and protects its contents 100% waterproof thanks to the roll-top closure.



PRESTIGE

- › Newly designed Gravel crosser w/ longer wheelbase (stable handling!) & lots of tire clearance (comfort!)
- › Aluminium fork w/ tapered steerer, thru-axle and eyelets for Bike Packing
- › Gravel-worthy Shimano GRX 2x11-spd drivetrain & hydraulic GRX Flatmount disc brakes
- › Ultra-fast Schwalbe G-One Bite tires (foldable)
- › 6 frame sizes from 48 to 61 cm

WEIGHT	10,3 kg
SIZES	48, 51, 54, 56, 58, 61 cm
FRAME	Aluminium 6061 TB
COLOR	Phantom Black Petrol Blue

Fork	STEVENS S-Lite Aluminium
Wheels	Fulcrum Rapid Red 900 DB
Tires	Schwalbe G-One Bite 40-622 foldable
Brakes	Shimano GRX 400/600 STI, 160/160 mm
Derailleurs	Shimano GRX 810, 11-speed GRX 810
Crankset	Shimano GRX 600
Gears	46-30 T (f) 11-34 T (r)
Cockpit	Oxygen Scorpo Aero Gravel Scorpo Road
Saddle S.post	Oxygen Triton Scorpo





GAVERE

- › Newly designed Gravel crosser w/ longer wheelbase (stable handling!) & lots of tire clearance (comfort!)
- › Aluminium fork w/ tapered steerer, thru-axle and eyelets for Bike Packing
- › Gravel-worthy Shimano GRX 2x10-spd drivetrain & hydraulic GRX Flatmount disc brakes
- › Ultra-fast Schwalbe G-One Bite tires
- › Gravel cockpit w/ the new Oxygen Scorpio Aero Gravel handlebar

WEIGHT	10,8 kg
SIZES	48, 51, 54, 56, 58, 61 cm
FRAME	Aluminium 6061 TB
COLOR	Highland Green

Fork	STEVENS S-Lite Aluminium
Wheels	Fulcrum Rapid Red 900 DB
Tires	Schwalbe G-One Bite 40-622
Brakes	Shimano GRX 400, 160/160 mm
Deraillleurs	Shimano GRX 400 Shadow+, 10-speed GRX 400
Crankset	Shimano GRX 600
Gears	46-30 T (f) 11-36 T (r)
Cockpit	Oxygen Scorpio Aero Gravel Scorpio Road
Saddle S.post	Oxygen Cyrius Scorpio



TABOR

- Newly designed Gravel crosser w/ longer wheelbase (stable handling!) & lots of tire clearance (comfort!)
- Aluminium fork w/ eyelets for Bike Packing
- Gravel-worthy Shimano GRX/Tiagra 2x10-spd drivetrain & mechanical TRP Spyre C disc brakes
- Ultra-fast Schwalbe G-One Bite tires
- Gravel cockpit w/ the new Oxygen Scorpio Aero Gravel handlebar

WEIGHT	11,1 kg
SIZES	48, 51, 54, 56, 58, 61 cm
FRAME	Aluminium 6061 TB
COLOR	Foggy Grey

Fork	STEVENS S-Lite Aluminium
Wheels	Shimano TX505 Oxygen RM-R20
Tires	Schwalbe G-One Bite 40-622
Brakes	TRP Spyre C/Shimano Tiagra, 160/160 mm
Derailleurs	Shimano GRX 400 Shadow+, 10-speed GRX 400
Crankset	Shimano GRX 600
Gears	46-30 T (f) 11-36 T (r)
Cockpit	Oxygen Scorpio Aero Gravel Driver Road
Saddle S.post	Oxygen Cyrius Driver Road



SUPREME PRO

- › Fast commuter road bike w/ STEVENS' cyclocross DNA
- › Weight-optimized aluminium frame & fork
- › Shimano GRX 2x11-speed drivetrain plus hydraulic GRX Flatmount disc brakes
- › Fast Schwalbe G-One Allround tires (40 mm!)
- › High-end commuter details: hub dynamo, Supernova LED front beam, SKS fenders ...

WEIGHT	11,5 kg
SIZES	50, 52, 54, 56, 58, 60, 62 cm
FRAME	Aluminium 6061 TB
COLOR	Umbra Grey

Fork	STEVENS S-Lite Aluminium
Wheels	Shutter Precision PL-7X Shimano FH-RS470 Oxygen PRO-D R20
Tires	Schwalbe G-One Allround 40-622 foldable
Brakes	Shimano GRX 400/600 STI, 160/160 mm
Deraileurs	Shimano GRX 810, 11-speed GRX 810
Crankset	Shimano GRX 600
Gears	46-30 T (f) 11-34 T (r)
Cockpit	Oxygen Scorpo Aero Scorpo Road
Saddle S.post	Oxygen Cyrius Scorpo Road
Lighting	Supernova E3 Pure 3 205 Lumen B+M Xeltec
Accessories	SKS mudguards



SUPREME

- › Fast commuter road bike w/ STEVENS' cyclocross DNA
- › Weight-optimized aluminium frame & fork
- › Shimano GRX 2x10-speed drivetrain plus hydraulic GRX Flatmount disc brakes
- › Fast Schwalbe G-One Allround tires (40 mm!)
- › Classy commuter details: hub dynamo, LED lights, fenders ...

WEIGHT	11,6 kg
SIZES	50, 52, 54, 56, 58, 60, 62 cm
FRAME	Aluminium 6061 TB
COLOR	Meteor Grey

MY BIKE

My Bike 02/2019

The STEVENS Supreme is a modern bike with racing handlebars for every occasion on asphalt and off-road.

Fork	STEVENS S-Lite Aluminium
Wheels	Shutter Precision PL-7X Shimano FH-RS470 Oxygen PRO-D R20
Tires	Schwalbe G-One Allround 40-622 foldable
Brakes	Shimano GRX 400, 160/160 mm
Derailleurs	Shimano GRX 400 Shadow+, 10-speed GRX 400
Crankset	Shimano GRX 600
Gears	46-30 T (f) 11-36 T (r)
Cockpit	Oxygen Scorpo Aero Scorpo Road
Saddle S.post	Oxygen Cyrius Scorpo Road
Lighting	B+M Myc IQ T Senso+ 50 Lux Xeltec
Accessories	SKS mudguards





MOUNTAINBIKE



TECHNOLOGY

THOUGHT THROUGH

Fun and efficient. Lightweight and reliable. Innovation and value-for-money. Where others surrender to apparent contradictions, STEVENS engineers keep on tinkering... Until the results on knobby tires can be found in the finest bike shops. Until our test riders return from the trails to the prototype workshop with a grin chiselled into their faces. Until our sponsored amateurs and pros get onto the podium as if it were a given. Until we have found the best-balanced specs for each and every model without any drawbacks. And until our bikes not only excel in magazine tests but in real life, while you ride them around your local trails, in the mountains or in the races!



1

ATHLETE'S CHOICE

In tough racing, there are riding situations where a softly responding suspension fork would be counterproductive. So the riders of the sporty STEVENS hardtails have the choice in most cases - and a remote control at hand with which the suspension fork can be blocked in a flash and set back to "sensitive" before the next root trail.

2

EFFICIENT USE OF MATERIALS

The extremely wide downtube of the Sonora carbon frame combined with large chainstays create a whole lot of lateral stiffness that's perfect for explosive acceleration. The Pressfit BB92 bottom bracket shell houses a Sram XO1 axle in DUB format running super smoothly for thousands of miles. In case of an emergency, a stainless steel plate integrated into the right chainstay protects the elegant frame.

3

STRONG PARTNERS

Four prime examples of top-of-the-range suppliers alone are gathered on the Sonora XO front: the Shimano disc brake with special heat sinks for aggressive trail use. The super light StepCast suspension fork from Fox. And the arrow-quick combination of DT Swiss wheels and Schwalbe tyres.

4

SIZE MATTERS

When it's about efficient rolling characteristics on rough terrain, a plus in stability, more traction and a feeling of security, most cyclists chose 29" wheels for good reason. But since this size might not fit everybody, STEVENS has equipped its smallest aluminium hardtail frame sizes with 27.5" wheels for a lower stand-over height and more balanced handling.





XC CARBON



SONORA XO
SONORA ES

SONORA

The STEVENS carbon hardtail mountain bikes are slim, fast, efficient and super light – the basis for achieving the best times and victories. The XC Carbon hardtails are sophisticated down to their last detail: The extra wide 'landscape' tube above the bottom bracket or the elegant transition of top tube into seatstays are two examples of the small details that reflect our years of experience in carbon frame construction. In this way we achieve a very high lateral stiffness with a minimum of material, which keeps the weight low. And thanks to the 29" wheels, the bike is very fast and has great rollover characteristics. These are the ingredients to meet the sporty and rugged requirements you expect from a competition bike. We skip the gimmicks and focus on two premises with the XC Carbon bikes: Top speed and top handling even on the most demanding terrain.

XC CARBON

SONORA XO

FEATURES //

1. CARBON AT ITS BEST

The super-light carbon frame with its optimised tube profiles immediately reveals the enormous stiffness and optimum power flow from the headset via the down tube and the super-rigid chain stays to the rear wheel. Ideal for racing: 29er wheels in all frame sizes.

2. LIGHTLY SPRUNG

The Fox 32 Float with Step Cast technology is the brightest star in the cross-country sky - under 1,400 grams "combat weight".

3. SINGLE SHIFTED

One at the front, twelve at the back - that makes 12 sensibly graded gears and a 500% transmission bandwidth for every single moment on the trail.

4. EFFICIENCY GUARANTEED

Only 3 things count for the STEVENS Racing Team: propulsion, propulsion and propulsion. Depending on the race situation, the sensitive Fox suspension fork is blocked or released from the handlebars in a flash.



SONORA XO

- › Carbon hardtail with first-class frame details and World Cup worthy handling
- › Lightweight Fox 32 Float Step Cast suspension fork w/ lockout remote control
- › Full Sram X01 Eagle DUB 1x12-speed drivetrain
- › DT Swiss 29" wheels with boost axle standard
- › Fast tires: Schwalbe Racing Ray / Racing Ralph

WEIGHT	10,1 kg
SIZES	29" - 16", 18", 20", 22"
FRAME	Carbon SL HMF
COLOR	Slate Grey

Fork	Fox 32 Float SC Performance, 100 mm
Wheels	DT Swiss X 1900 Spline
Tires	Schwalbe Racing Ray Racing Ralph 57-622 foldable
Brakes	Shimano Deore XT, 180/160 mm
Derailleurs	Sram X01 Eagle, 12-speed -
Crankset	Sram X01 Eagle B DUB Carbon
Gears	34 T (f) 10-52 T (r)
Cockpit	Oxygen Scorpo MTB 700 mm Scorpo MTB
Saddle S.post	Oxygen Roccia Scorpo MTB



SONORA ES

- › Carbon hardtail with first-class frame details and World Cup worthy handling
- › Lightweight Fox 32 Float Step Cast suspension fork w/ lockout remote control
- › DT Swiss 29" wheels with boost axle standard
- › Complete Shimano Deore XT 1x12-spd groupset
- › Fast tires: Schwalbe Racing Ray / Racing Ralph

WEIGHT	10,5 kg
SIZES	29" - 16", 18", 20", 22"
FRAME	Carbon SL HMF
COLOR	Fire Red

Fork	Fox 32 Float SC Performance, 100 mm
Wheels	DT Swiss X 1900 Spline
Tires	Schwalbe Racing Ray Racing Ralph 57-622 foldable
Brakes	Shimano Deore XT, 180/160 mm
Deraillleurs	Shimano Deore XT Shadow+, 12-speed -
Crankset	Shimano Deore XT
Gears	34 T (f) 10-51 T (r)
Cockpit	Oxygen Scorpo MTB 700 mm Scorpo MTB
Saddle S.post	Oxygen Roccia Scorpo MTB



SONORA

- › Carbon hardtail with first-class frame details and World Cup worthy handling
- › High-value entry to marathon/cross-country racing
- › Sram NX/SX Eagle DUB 1x12-speed drivetrain
- › Powerful Shimano BR-MT410 disc brakes
- › 29" wheels throughout all 4 frame sizes

WEIGHT	12,0 kg
SIZES	29" - 16", 18", 20", 22"
FRAME	Carbon SL HMF
COLOR	Carbon Venom Green

Fork	Rock Shox Recon Silver RL R Air, 100 mm
Wheels	Shimano MT400 Oxygen PRO-D X23
Tires	Schwalbe Rocket Ron 57-622 foldable
Brakes	Shimano BR-MT410, 180/160 mm
Derailleurs	Sram NX Eagle, 12-speed -
Crankset	Sram SX Eagle B DUB
Gears	34 T (f) 11-50 T (r)
Cockpit	Oxygen Scorpio MTB 700 mm Scorpio MTB
Saddle S.post	Oxygen Roccia Scorpio MTB







XC ALLOY



COLORADO 401
SENTIERO
DEVIL'S TRAIL

APPLEBEE
TANIWHA
TONGA

In addition to the STEVENS XC carbon racing bikes, our hardtail aluminium mountain bikes have been the basis for the success of the STEVENS bicycle brand for 30 years now. Since the beginning, our bikes have been repeatedly praised and awarded by the specialist media, our retailers, but also customers for our bikes' excellent price-performance ratio. And these successful characteristics you can also find in all of our XC aluminium hardtail models which are made to be super stiff yet extremely light. From the Colorado 401 at the top of the aluminium MTB range to the particularly affordable Tonga entry-level model, you are sure to get durability, excellent handling and lots of riding pleasure included with every bike. The XC Alloy series models are offered with different wheel sizes depending on the frame size. Frames up to size 18" roll on 29" wheels. Frames size 16" and smaller roll on 27.5" wheels.

XC ALLOY

COLORADO 401



FEATURES //

1. IT'S THE SIZE THAT COUNTS

One 27.5", four 29" options - the Colorado 401 really suits all riders with ambitions on tours and in races.

2. FRAME CONSTRUCTION ART

Triple-butt aluminium tubes are finely welded and finished with a subtle paint finish.

3. PRECISELY CONTROLLED

The Fox 32 Float has every riding situation under control with Tapered Steerer and Lockout remote control.

4. STRONGLY EQUIPPED

Disc brakes, crankset, shift lever and rear derailleur are all named Shimano Deore XT in 1x12-speed version.

COLORADO 401

- Agile and lightweight hardtail made of triple butted aluminium 6061 w/ top-notch specs
- Classy Fox 32 Float Rhythm suspension fork
- Shimano Deore XT 1x12-speed drivetrain w/ extra wide gearing range
- Powerful Shimano Deore XT disc brakes
- 5 frame sizes w/ size specific wheel sizes

WEIGHT	11,5 kg
SIZES	27,5" - 16" 29" - 18", 20", 22", 24"
FRAME	Aluminium 6061 TB
COLOR	Foggy Grey

Fork	Fox 32 Float Rhythm, 100 mm
Wheels	Shimano Deore XT Sun Ringle Helix 27 SL
Tires	Schwalbe Nobby Nic 57-584 (27,5") Racing Ray, Racing Ralph 57-622 (29") foldable
Brakes	Shimano Deore XT, 180/160 mm
Derailleurs	Shimano Deore XT Shadow+, 12-speed -
Crankset	Shimano Deore XT
Gears	32 T (f) 10-51 T (r)
Cockpit	Oxygen Scorpo MTB 700 mm Scorpo MTB
Saddle S.post	Oxygen Havoc Scorpo MTB



SENTIERO

- › Smooth running aluminium hardtail for worry-free touring rides
- › Classy Fox 32 Float Rhythm air suspension fork w/ remote lockout and thru axle
- › Full Shimano SLX/Deore 1x12-speed drivetrain
- › Powerful Shimano BR-MT410 disc brakes
- › 4 frame sizes w/ size specific wheel sizes

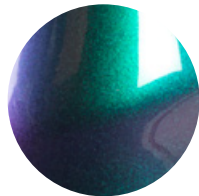
WEIGHT	12,4 kg
SIZES	27,5" - 16" 29" - 18", 20", 22"
FRAME	Aluminium 6061 TB
COLOR	Python

bike

BIKE 04/2019

Not just an eye-catcher but a well-rounded package with great specs and handling: The Sentiero excels as a balanced touring hardtail.

Fork	Fox 32 Float Rhythm, 100 mm
Wheels	Shimano MT410 Oxygen PRO-D X23
Tires	Schwalbe Rocket Ron 57-584 622 foldable
Brakes	Shimano BR-MT410, 180/160 mm
Deraillleurs	Shimano SLX Shadow+, 12-speed -
Crankset	Shimano FC-MT510-1
Gears	32 T (f) 10-51 T (r)
Cockpit	Oxygen Scorpo MTB 700 mm Scorpo MTB
Saddle S.post	Oxygen Havoc Scorpo MTB



DEVIL'S TRAIL

- › Weight-optimized trail and touring hardtail w/ good lateral stiffness
- › Responsive RockShox Recon Gold RL Air suspension fork w/ thru-axle
- › Shimano Deore 2x11-speed drivetrain w/ 42 T granny ring
- › Fast, trail worthy tire combination
- › Reliable, precise Shimano disc brakes

WEIGHT	13,2 kg
SIZES	27,5" - 16" 29" - 18", 20", 22", 24"
FRAME	Aluminium 6061 TB
COLOR	Stealth Black

Fork	Rock Shox Recon Gold RL, 100 mm
Wheels	Shimano HB-MT400-B Deore FH-M6000 Oxygen RM-M19
Tires	Schwalbe Rocket Ron 57-584 622 foldable
Brakes	Shimano BR-MT410, 180/160 mm
Derailleurs	Shimano Deore Shadow+, 11-speed Deore
Crankset	Shimano FC-MT5100-2
Gears	36-26 T (f) 11-42 T (r)
Cockpit	Oxygen Driver 700 mm Driver
Saddle S.post	Oxygen Havoc Driver



XC ALLOY

APPLEBEE

FEATURES //

1. TOURING CAPABLE

The relaxed trail geometry and wheel sizes adapted to the frame size are the basis for riding fun and comfort.

2. RELIABLE

The Applebee's equipment is free of weak points. Instead: Shimano Deore drive plus hydraulic disc brakes.

3. SPORTY

Even MTB racers rely on the sophisticated tread design of Rocket Ron tyres - for good reasons: low rolling resistance with very good grip.

4. VARIABLE

The SR Suntour Raidon air suspension fork can be locked from the handlebars for optimum traction and comfort in every riding situation.



OLD ACQUAINTANCE



Allow me, my name is Derailleur. SideSwing front derailleur. Where simple minds have shrunk to a single chainring, I - together with my colleague Rear Derailleur - am responsible for ensuring that one of the many finely graduated ratios is precisely controlled under any riding conditions. I like to do my job even under load. After all, what we do here is an ambitious off-road sport.



HAMBURG CONDITIONS



In this junction, which is optimally shaped to withstand the load, the head tube, down tube and top tube are carefully welded to form a rigid yet lightweight unit. This is where it is decided whether precise handling and directional stability are delivered on the trail.

APPLEBEE

- › Weight-optimized trail and touring hardtail w/ good lateral stiffness
- › SR Suntour Raidon air/oil suspension fork
- › Fast, trail worthy tire combination
- › Reliable Shimano Deore 2x10-speed drivetrain plus hydraulic disc brakes
- › 4 frame sizes w/ size specific wheel sizes

WEIGHT	27,5" 13,0 kg 29" 13,2 kg
SIZES	27,5" - 16" 29" - 18", 20", 22"
FRAME	Aluminium 6061 TB
COLOR	Velvet Black Hot Pepper Red

Fork	SR Suntour Raidon XC RL-R Air, 100 mm
Wheels	Shimano HB-M3050 FH-M3050 Oxygen RM-M19
Tires	Schwalbe Rocket Ron 57-584 622 foldable
Brakes	Shimano BR-MT410, 180/160 mm
Derailleurs	Shimano Deore Shadow+, 10-speed Deore
Crankset	Shimano FC-M4100-2
Gears	36-26 T (f) 11-42 T (r)
Cockpit	Oxygen Driver 700 mm Driver
Saddle S.post	Oxygen Havoc Driver





TANIWHA

- › Weight-optimized aluminium frame with internal cable routing
- › Enormous range of frame sizes, from junior riders to riders with strong physique
- › Responsive, light suspension fork with lockout
- › Powerful, reliable Shimano disc brakes
- › Ergonomic Riser cockpit w/locking grips

WEIGHT	27,5" 13,7 kg 29" 13,9 kg
SIZES	27,5" - 14", 16" 29" - 18", 20", 22", 24"
FRAME	Aluminium 6061 DB
COLOR	Stealth Black Shiny Petrol (- 22")

Fork	SR Suntour XCR32 LO-R, 100 mm
Wheels	Shimano HB-TX505 FH-TX505-8 Oxygen RM-M19
Tires	Schwalbe Smart Sam 57-584 622
Brakes	Shimano BR-MT200, 180/160 mm
Derailleurs	Shimano Deore Shadow, 9-speed Alivio
Crankset	Shimano FC-MT210-2
Gears	36-22 T (f) 11-36 T (r)
Cockpit	Oxygen Driver 700 mm Driver
Saddle S.post	Oxygen Raceline Driver





TONGA

- › Solid hardtail w/ relaxed touring geometry
- › Frame size specific wheel sizes
- › Shimano Alivio/Altus gears w/ optimized gearing range
- › Powerful, reliable Shimano disc brakes
- › Responsive suspension fork with lockout

WEIGHT	27.5" 14,3 kg 29" 14,6 kg
SIZES	27,5" - 14", 16" 29" - 18", 20", 22"
FRAME	Aluminium 6061
COLOR	Stealth Black Pink Punch

Fork	SR Suntour XCM HLO, 100 mm
Wheels	Shimano HB-TX505 FH-TX505-8 Oxygen RM-M19
Tires	Schwalbe Smart Sam 57-584 622
Brakes	Shimano BR-MT200, 180/160 mm
Deraillleurs	Shimano Alivio Shadow, 9-speed Altus
Crankset	Shimano FC-MT210-2
Gears	36-22 T (f) 11-36 T (r)
Cockpit	Oxygen Driver 700 mm Driver
Saddle S.post	Oxygen Raceline Driver









JUNIOR SPORT

TEAM RC
FURIOUS

BEAT SL DISC
BEAT SL

Those who get their kids excited about cycling strengthen their self-confidence at an early age, make them mobile, let them do something for their fitness in a playful way and show them that exercise and sport are connected with fun. Nothing is more motivating than a mountain bike that not only looks like the big ones, but is just as sporty to ride and lightweight (sometimes under 10 kilograms) to suit children. That's why STEVENS equips its junior mountain bikes with many details that are precisely tailored to the needs of young riders: Adapted frame and wheel dimensions, easy-grip hydraulic disc brakes and, on the larger frames, a suspension fork that responds optimally to the rider's weight. We guarantee you this: Even if your child has outgrown the frame size after a few years, the high-quality components and durable STEVENS frames ensure for a high resale value.

TEAM RC

- › Lightweight aluminium frame with trail-oriented geometry in 4 sizes
- › Reliable Shimano Acera/Altus 2x8-speed gears
- › Responsive aluminium suspension fork
- › Powerful, precise Shimano hydraulic disc brakes
- › Lightweight Oxygen cockpit w/ riser bar

WEIGHT	24" - 12,8 kg 27,5" - 14,1 kg
SIZES	24" - 12,5" 27,5" - 14", 16", 18"
FRAME	Aluminium 6061 DB
COLOR	Blue Pink Stealth Black

Fork	SR Suntour XCT JR-L HLO, 80 mm (24") SR Suntour XCM HLO, 100 mm (27,5")
Wheels	Shimano HB-TX505 FH-TX505-8 Oxygen RM-M19
Tires	Schwalbe Smart Sam 54-507 (24") 54-584 (27,5")
Brakes	Shimano BR-MT200, 180/160 mm
Deraillleurs	Shimano Acera, 8-speed Altus
Crankset	Oxygen Aluminium Forged
Gears	36-22 T (f) 12-32 T (r)
Cockpit	Oxygen Driver 600 mm (27,5": 640 mm) Driver
Saddle S.post	Oxygen Raceline Driver



24"



27,5"





FURIOUS

- › Sportive commuter w/ offroad capability for weekends and holiday trips
- › Light, compact aluminium frame
- › Reliable Tektro hydraulic disc brakes
- › Fully equipped w/ hub dynamo, fenders, kickstand ...
- › Responsive SR Suntour aluminium suspension fork (24": 50 mm / 27.5": 100 mm!)

WEIGHT	24" - 14,3 kg 27,5" - 15,5 kg
SIZES	24" - 12,5" 27,5" - 14", 16", 18"
FRAME	Aluminium 6061
COLOR	Universe Black Shiny Petrol

Fork	SR Suntour XCT JR, 50 mm (24") SR Suntour XCE28, 100 mm (27,5")
Wheels	Shimano DH-3D37 FH-TX505-8 Oxygen COMP-D X19
Tires	Schwalbe Landcruiser Plus 50-507 (24") Smart Sam 54-584 (27,5")
Brakes	Tektro HD-J285 (24") HD-M275 (27.5"), 180/160 mm
Deraillleurs	Shimano Altus, 8-speed Altus
Crankset	Oxygen Aluminium Forged
Gears	36-22 T (f) 11-34 T (r)
Cockpit	Oxygen Driver 600 mm (27,5": 640 mm) Driver
Saddle S.post	Oxygen Raceline Driver
Lighting	Trelock I Veo 20 Lux Duo Top
Accessories	STEVENS Clip-On mudguards kickstand STEVENS Alu bell



24"



27,5"





JUNIOR SPORT

BEAT SL DISC

FEATURES //

1. BIKE-KIDS, WATCH OUT

Your new favourite toy weighs no more than Daddy's Hardtail - thanks to the compact frame, aluminium fork and extra light drive components.

2. COMPLETELY ADAPTED

Child-friendly short crank arms, a smooth 1x8-speed gear shift and even disc brake levers with shorter reach are a matter of course for STEVENS.

3. ADMIRATION GUARANTEED

All friends will envy you for the refined "Python" paint. And your fathers will suddenly wish they could go back to school.

4. RIDING PLEASURE, OF COURSE

These tyres are ready for pump track, dirt jump, slopestyle & Co - exactly the kind of adventures you will be experiencing out there in the future.

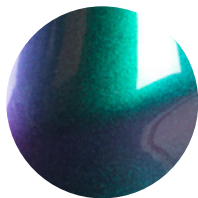


BEAT SL DISC

- › Sporty compact frame w/ extra low standover height
- › Extra light due to aluminium fork and triple butted frame tubes
- › Hydraulic disc brakes w/ kid-friendly lever reach
- › Single chainring for intuitive 8-speed shifting
- › Kid-size crank arm length, suitable gear spread

WEIGHT	20" - 9,3 kg 24" - 9,9 kg
SIZES	20" - 11,5" 24" - 12,5"
FRAME	Aluminium 6061 TB
COLOR	Python

Fork	STEVENS Alu Unicrown
Wheels	Oxygen Alu RM-M21 Disc
Tires	Schwalbe Billy Bonkers 50-406 (20") 50-507 (24")
Brakes	Tektro HD-J285, 140/140 mm (20") 160/160 mm (24")
Derailleurs	Shimano Altus, 8-speed
Crankset	Oxygen Aluminium Pro
Gears	32 T (f) 11-32 T (r)
Cockpit	Oxygen Pistol 520 mm (24": 560 mm) Aluminium Pro
Saddle S.post	Oxygen Sportline Aluminium



BEAT SL

- › Sporty compact frame w/ extra low standover height
- › Extra light due to aluminium fork and triple butted frame tubes
- › Single chainring for intuitive 8-speed shifting
- › Kid-size crank arm length, suitable gear spread
- › Fast tires for bike paths and off-road trails

WEIGHT	20" 8,9 kg 24" 9,6 kg
SIZES	20" - 11,5" 24" - 12,5"
FRAME	Aluminium 6061 TB
COLOR	Lightning Orange Petrol Turquoise Pink Petrol

Fork	STEVENS Alu Unicrown
Wheels	Oxygen Alu RM-M17
Tires	Schwalbe Billy Bonkers 50-406 (20") 50-507 (24")
Brakes	Tektro STB-01, V-Brake
Derailluers	Shimano Altus, 8-speed
Crankset	Oxygen Aluminium Pro
Gears	32 T (f) 11-32 T (r)
Cockpit	Oxygen Pistol 520 mm (24": 560 mm) Aluminium Pro
Saddle S.post	Oxygen Sportline Aluminium





► 20" // Pink Petrol



► 24" // Lightning Orange



► 24" // Petrol Turquoise





BIKEWEAR & ACCESSORIES

EQUIPE
RACING TEAM

CASUAL WEAR
BAGS & PARTS



For many active folks, cycling is a sport. And for your sport, you need the right clothes – after all, you don't go swimming with jeans. With this in mind, we have designed the corresponding STEVENS outfits to match our sporty bikes. Together with Santini, Italian manufacturer of high-quality cycling clothing, we have been presenting our own STEVENS cycling collection since 2003. Our bikewear line does not only include fitted cycling jerseys for sporty use, but also for the everyday and leisure cyclist we have clothing in our range that makes cycling more comfortable at any time of day or year. For example our everyday softshell jacket, or the T-shirts and hoodies made of 100 percent skin-friendly, organic cotton, right up to the baseball cap from New Era. And whether a drinks bottle, multitool or bottle holder...if it has STEVENS written on it, you can expect to receive STEVENS quality.

SANTINI SMS

MADE IN ITALY, MADE WITH PASSION

Our Stevens cycling collection by Santini SMS includes short and long sleeve jerseys, shorts with padding (bibs), long cycling tights, vests, jackets and much more – everything you need for comfortable cycling. Without the correct, functional clothing, rides can quickly become cold and uncomfortable. You can rely on the quality of Santini considering the Italian com-

pany's clothing has been a solid mainstay for many years in the professional peloton due to their fit and functional designs and details. Santini produces more than 3,000 garments a day in its hometown of Bergamo and exports about 75 percent of its production worldwide. As a partner of the UCI, the family business provides the world champion jerseys and has

equipped numerous professional teams for many years. Santini designs and manufactures everything in Italy. The "Made in Italy, made with passion" philosophy is a unique, lived promise of quality that distinguishes Santini from other manufacturers.

Info: santinisms.it





1 WIND VEST

Fabric: 1. (58 %): 100 % polyester,
2. (42 %): 90 % polyester, 10 % spandex
water & wind-repellent

Extras: full-length front zipper, mesh back,
elastic seam and arm holes

Color: black-white

Sizes: XS, S, M, L, XL, XXL, 3XL



2 WINTER THERMAL JACKET

Fabric: Breezewall Winter, 100 % polyester,
breathable, water & wind-repellent

Extras: full-length underlayed front zipper,
triple back pocket

Color: black-white

Sizes: XS, S, M, L, XL, XXL, 3XL



3 MTB SHORT SLEEVE

Fabric: 91 % polyester, 9 % spandex

Color: black-white

Sizes: S, M, L, XL, XXL, 3XL



1 JERSEY SHORT SLEEVE AERO

Fabric: 1. (37 %): 91 % polyester, 9 % spandex
2. (40 %): 88 % polyester, 12 % spandex
3. (23 %): 84 % polyester, 16 % spandex
Extras: full-length front zipper, triple back pocket & 1 zippered key pocket, reflective strips, elastic silicone cuff
Color: white-red, black-white, grey-firered-white
Sizes: XS, S, M, L, XL, XXL, 3XL

2 JERSEY LONG SLEEVE

Fabric: Superenergy/Microsense, 100 % polyester
Extras: full-length front zipper, triple back pocket & 1 zippered key pocket, elastic silicone cuff
Color: white-red, black-white, grey-firered-white
Sizes: XS, S, M, L, XL, XXL, 3XL

3 BIB TIGHTS

Fabric: 80 % polyamide, 20 % spandex, brushed reverse, warming, mesh back
Extras: reflective pipings, reflective prints
Color: black
Sizes: XS, S, M, L, XL, XXL

4 SOCKS LONG

Fabric: 67 % polyamide (Skinlife), 30 % polyamide, 3 % Lycra
Colors: white, black
Sizes: 36-39, 40-43, 44-47



5 RACE CAP

Fabric: 65 % polyester, 35 % cotton
 Extras: comfort-fit due to elastic headband
 Colors: black-white
 Size: unisize

RACING TEAM



1 JERSEY SHORT SLEEVE

Fabric: Energy/Microsense, 100 % polyester
Extras: full-length front zipper, triple back pocket & 1 zippered key pocket, elastic silicone cuff
Color: red-black-white
Sizes: XS, S, M, L, XL, XXL, 3XL



2 JERSEY LONG SLEEVE

Fabric: Superenergy/Microsense, 100 % polyester
Extras: full-length front zipper, triple back pocket & 1 zippered key pocket, elastic silicone cuff
Color: red-black-white
Sizes: XS, S, M, L, XL, XXL, 3XL



3 WIND VEST

Fabric: Breezwall Leggero + mesh, 100 % polyester, breathable, water & wind-repellent
Extras: full-length underlayed front zipper, mesh back, elastic seam and arm holes
Color: red-black-white
Sizes: XS, S, M, L, XL, XXL, 3XL

4 WINTER THERMAL JACKET

Fabric: Breezwall Winter, 100 % polyester, breathable, water & wind-repellent
Extras: full-length underlayed front zipper, triple back pocket
Color: red-black-white
Sizes: XS, S, M, L, XL, XXL, 3XL



5 RAIN JACKET

Fabric: 100 % polyamide, polyurethane coating, sealed seams, breathable, water & windproof

Extras: lightweight jacket, reflective prints, elastic seams, chin protection, storage bag

Color: transparent

Sizes: XS, S, M, L, XL, XXL

6 BIB SHORT AERO

Fabric: 1. (26 %): 80 % polyamide, 20 % spandex
2. (66 %): 80 % polyamide, 20 % spandex
3. (8 %): 80 % polyamide, 20 % spandex

Extras: elastic leg ends, silicone gel chamois for optimized distribution of pressure, elastic mesh straps

Color: black-white

Sizes: XS, S, M, L, XL, XXL, 3XL

7 RACE CAP

Fabric: 65 % polyester, 35 % cotton

Extras: comfort-fit due to elastic headband

Colors: red-black-white, WC stripes

Size: unisize

CASUAL WEAR



5



6



1



1



1

1 STEVENS T-SHIRT

Fabric: 100 % organic cotton
Extras: basic cut, crew neck
Colors: black, grey, white
Sizes: XS, S, M, L, XL, XXL

2 SOFTSHELL VEST

Fabric: 100 % polyester, TPU membrane, fleece lining, breathable, water- and wind-repellent
Extras: full-length underlayered front zipper, chin protection, 3 zippered pockets
Color: black
Sizes: XS, S, M, L, XL, XXL

3 SOFTSHELL JACKET

Fabric: 100 % polyester, TPU membrane, fleece lining, breathable, water and wind-repellent
Extras: full-length underlayered front zipper, chin protection, 3 zippered pockets
Color: black
Sizes: XS, S, M, L, XL, XXL

4 STEVENS HOODIE

Fabric: 100 % organic cotton
Extras: full-length front zipper, 2 pockets
Color: black
Sizes: XS, S, M, L, XL, XXL



7



8



9



2



3



4

5 SCARF CAP

Fabric: 100 % PES breathable fiber
Extras: Perfect fit due to elastic knitwear and cord stopper
Color: black
Size: unisize

6 KNIT BEANIE BY NEW ERA

Fabric: 100 % PA synthetic elastic fiber
Color: black
Size: unisize

7 MILITARY CAP

Fabric: 100 % cotton
Color: grey
Size: Unisize

8 SNAPBACK PODIUM BY NEW ERA

Fabric: 100 % cotton
Extras: adjustable size
Color: black
Size: S/M

9 SNAPBACK CAP BY NEW ERA

Fabric: 100 % cotton
Extras: adjustable size
Color: black
Sizes: S/M, M/L

BAGS & PARTS



1 BIKE TRAVELBAG LUXE

Fabric: robust nylon, 100 % polyamide with extra thick padding

Extras: simple packing system, best protection for all journeys, suitable for transporting cross bikes, MTBs and road bikes, big main pocket, 2 separate padded wheel compartments on the side (suitable for 700 x 35 cm), additional pockets, fastening system for fork and frame, chassis with skate wheels, handles and shoulder straps

Color: black

Measurem.: approx. 130 cm x 74 cm x 23 cm, volume of approx. 220 liters

2 BIKE TRAVELBAG PRO

Fabric: 600D, 100 % polyester with padding

Extras: simple packing system, big main pocket, several inner compartments with fastening options, handles, shoulder straps, wheels for easier transport

Color: black

Measurem.: approx. 114 cm x 90 cm x 27 cm, approx. 270 liters

3 WHEEL BAG

Fabric: 100% Polyester, coated PVC

Extras: double zipper

Color: black

Measurem.: diameter 76 cm, width 8 cm

4 COFFEE MUG

Fabric: porcelain

Color: black-white

5 UMBRELLA

Fabric: 100 % polyester

Extras: storm protection, reflective print

Color: black

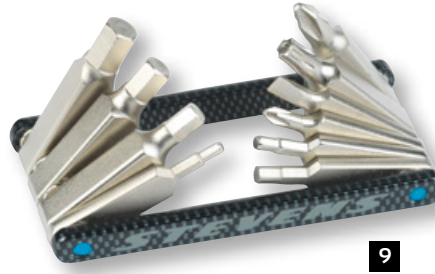
Diameter: approx. 130 cm

6 SHOW BAG

Fabric: 100 % polyester

Extras: 1 zippered inner compartment

Color: black-white



7 ASS SAVER

Fabric: 100 % recyclable polypropylene
Weight: 18 g
Color: black-white
Measurem.: 370 x 110 mm

9 MULTITOOL CARBON-10

Fabric: carbon, ultra flat
10 tools: socket screws 2, 2.5, 3, 4, 5, 6, screwdriver -/x/X, torx 25
Finish: carbon glossy

11 BOTTLE CAGE SCORPO SL 2.0

Fabric: carbon 3K, dynamic shape
Finish: carbon matt white, carbon matt neon yellow
Weight: 20.5 g

8 SADDLE BAGS

Fabric: 100 % polyamide
Extras: velcro strips for mounting to the saddle, tube and tire lever included
Color: black
Sizes: cross tube 700 x 28-37", road bike tube 700x18-25"

10 BOTTLES

Fabric: plastic
Extras: screw cap, wide filler opening
Volume: 500 ml, 750 ml
Colors: transparent-black, transparent-WC stripes, transparent-red-black

12 BOTTLE CAGE OXYGEN CAGE

Fabric: plastic
Colors: white, black
Weight: 27.5 g

13 BOTTLE CAGE SIDELOADER

Fabric: plastic
Color: black
Weight: 40 g



RESEARCH & DEVELOPMENT

GOOD IS GOOD, BUT BETTER CARRIES IT

We at STEVENS have been working according to this maxim for 30 years. We are curious, we don't shy away from complex innovations and are always looking for the perfect bike – just like a surfer is always looking for the perfect wave. Continuously developing the bikes is a high priority for the engineers, designers and production facilities. This is seriously demanding work as it is often no longer a matter of millimeters or grams, but of micrometers and milligrams. Our guidelines for development: Every bike must be as light, sporty and high quality as possible, according to the demands, areas of use and the customer's budget.

COURAGE TO INNOVATE

The development of our bikes is all about combining minimum weight and maximum stability, appreciable comfort and maximum sportiness. New materials have to be tested and inspected, and built-in and add-on parts have to be precisely integrated. To achieve this, you need the best hardware and software, state-of-the-art production machines, high-tech test benches and laboratory equipment. And...the courage to question proven solutions and technologies through innovation.

KEEP GOING, KEEP GOING

For all those who, like us, come from the cycling world, there is only one motto: Keep going until you reach your goal. And then immediately start thinking about the next stage. We continue to develop our bikes until we are one hundred percent satisfied and can say: "Perfect – at this point in time". And then it directly goes on to the next stage, improving details, working on the design... 'Never Stop'.

POWER IN NUMBERS

Those who retreat alone to their little room to tinker will not get very far. That's why there is a constant exchange between STEVENS engineers and the experts from our partners. This is how we create solutions that may sometimes only improve small details of our bikes – but which make the difference. A selection: With SR-Suntour, we have initiated the quick-release axles on the pedelecs and bikes with disc brakes – a detail that is now well established. For bikes with hub gears, our sliding dropouts keep the rear wheel perfectly in position. STEVENS development of the Power Tube pedelec frames is also groundbreaking: The harmonious tube shapes integrate the batteries and motors in a clearer design language, the new look of the e-bikes clearly stands out from traditional e-bikes of the past.





QUALITY ASSURANCE

LIGHTWEIGHT AND SOLID VALUE

Two characteristics run through the entire range of STEVENS bikes: Lightweight yet extremely durable and value retention. We achieve these goals thanks to our engineers who develop all components down to the smallest detail, then personally follow and continuously check the production process from beginning to end. The development of new, highly technical e-bikes takes well more than two years from idea to series product. In the test phase, every innovation is critically examined and improved to perfection. To ensure that not only the prototypes are perfect, but also the series products, our experts monitor the quality standards from development to production.

EXTERNAL EXPERTISE

Trust is good, control is better. According to this motto, we do not rely exclusively on STEVENS' own expertise. For many years, we also work with the Zedler Institute for Bicycle Technology and Safety. Certified engineer Dirk Zedler, a publicly appointed and sworn expert for bicycles, has been in business for more than twenty years and is a sought-after bicycle expert. All STEVENS products are put to the test in his institute. Our aluminium and carbon frames, the forks, seatposts, wheels – everything, down to the last detail, is examined for strengths and weaknesses. This is the only way we can meet our very high quality standards, which confidently allows us to now offer a six-year warranty on our frames.

LIVED PASSION

Cycling is a passion – and all employees at STEVENS live this passion. We could not imagine a life without cycling. In combination with the professional expertise of each individual, this fascination for cycling is one of the most important pillars of why STEVENS bikes have been meeting the highest quality standards for 30 years. Whether it's our employees' daily bike commute to work, a long ride during the holidays, a sporty after-work tour, a cyclotourist race in the weekend, or even our STEVENS-sponsored cycling pros' international competitions, our team accumulates all these daily experiences on our bikes to evaluate them and incorporate the findings into our new developments.



STEVENS PREMIUM SUPPLIERS

OUTSTANDING QUALITY AND PERFORMANCE

STEVENS Bikes is known for quality, reliability and innovation. This is why we rely on first-class brand products when it comes to equipping our bikes. The manufacturers of these carefully chosen products have proven themselves to be market leaders in terms of quality, innovation, know-how as well as service. We have invested much time and effort into developing these relationships so that we can continue to deliver the best bikes possible. Many of our bikes' innovations, in fact, have come out of this close relationship with our suppliers.



SHIMANO

Experience meets innovation

With 100 years of experience in the development of bicycle components, SHIMANO possesses a unique wealth of knowledge. Combined with Japanese pioneering spirit, it ensures that every new generation of components is technologically up-to-date. "Experience meets innovation" is Shimano's secret for parts made to win the biggest races in the world. But not only professionals benefit from this know-how. Over the years, SHIMANO's mid-tier groups "inherit" tried and trusted high-end technologies and features, therefore making pro technology accessible for hobby cyclists.

FOX FACTORY

Headquartered in Scotts Valley, California, USA, FOX designs and manufactures high-performance ride dynamics products primarily for bicycles, side-by-side vehicles, on-road/off-road/all-terrain vehicles, snowmobiles, specialty vehicles and motorcycles. For more than four decades, FOX's team of enthusiasts and professional athletes has been improving vehicle performance through a unique commitment to redefining ride dynamics. Bob Fox, the founder that started FOX in the year 1974, once stated: "We are never done!" This mindset feeds Fox's passion to build the best suspension products they can to provide race-winning performance.



SCHWALBE - PROFESSIONAL BIKE TIRES

All of us at Schwalbe love the bike. What makes it fascinating is its ingenious simplicity, astonishing versatility, and use of cutting-edge technology and creative designs. To this end we play our part with unlimited enthusiasm - as the world's leading bicycle tire specialist. Our family-run, third-generation company is driven by innovation, such as the new „Decade of Super“ carcass constructions for MTB tires, the high performance ADDIX® compound, or tubeless technology for road bikes.

DT SWISS

Swiss engineering, innovation and passion for cycling made DT Swiss, originally a pure supplier for spokes, become one of the leading manufacturers of complete wheels and all its components – spokes, nipples, rims and hubs. DT Swiss meticulously develops high-performance cycling components that provide a competitive edge to every ambitious cyclist*. DT Swiss want to share its passion for cycling – no matter if on or off-road – with all its customers.

*if you have goal you are ambitious

ATTITUDE

THE TAILOR-MADE BIKE

Regardless of whether you are sitting on a racing, cross or mountain bike – the bike must fit the athlete like a lid on a pot. Because anyone who sits in a racing saddle for long distances or spends many hours on a MTB over rough and smooth, uphill and downhill, will quickly notice where there are a few millimeters too many or too few between saddle, pedals and handlebar. This is why we launched our custom bike program 18 years ago, where you can choose and assemble your dream bike from many options. For a racing cyclist, their racing bike is their “trademark” identity. And anyone who invests many thousands of euros in a bike wants to be sure that they get exactly the bike that meets their technical and visual requirements. This is why our custom bike concept has been so successful for years.



TEST RIDE & ADVICE

STEVENS mountain bikes are available in up to six different frame sizes, depending on the model. With some of our racing bikes we even have eight frame variants. This is because we know that the right frame size is the basis for a perfect bike. But frame size is not the only deciding factor; the length from saddle to handlebar also needs to be right. Whether this is the case is often only noticed during a test ride. This is one of the reasons why expert advice from specialist retailers and test rides are very important to STEVENS. The retailer can use other saddles, stem lengths and handlebar shapes to optimally adjust the bike to suit your needs.

SOFT TUNING

We have designed our mountain bikes to fit very wide tire profiles that offer more damping. For racing bikes, wider tires have been popular for a few years now, so our frames and forks allow tire thicknesses of up to 28 mm. Our extra thick handlebar tape, which reduces vibrations and shocks to the hands, provides additional comfort. STEVENS frames are deliberately designed for the narrower 27.2 mm diameter seatposts because these have a much better flex than the 31.6 mm oversize posts. To ensure that the seat tube still has the necessary lateral stiffness, the tube diameter towards the bottom bracket is increased.

The comfort tip: Our Scorpio Carbon SL road bike seatpost has outstanding flex for comfortable long distance riding.

MTB WHEEL SIZES

Our experience shows that the choice of wheel size for mountain bikes should also depend on the frame size. We offer both 27.5" and 29" wheels because, depending on the frame size, the different tire diameters ensure for optimal handling. Our aluminium hardtail frame sizes from 18" upwards, and our carbon MTBs roll with 29" wheels and thus have very good rollover characteristics and high suppleness for comfortable, controlled riding. We equip the aluminium frame sizes 16" and smaller with 27.5" wheels. We also continue this adaptation for youth and children's mountain bikes and go as small as 20" wheels.



STEVENS SERVICE

RETAILERS & ADVICE

STEVENS bikes are only available from selected specialist retailers, most of whom we have worked with for many years. We have deliberately decided against online sales, because a bicycle is a technical, high-quality product that has to be very individually tailored to ensure that the investment is really enjoyable. That is why we see local bicycle retailers as the perfect partners for our high-quality bikes. Your STEVENS retailer will give you comprehensive advice and help you to find the optimal bike for your wishes, requirements and purposes from the large selection of bikes and e-bikes. For you, this means: unadulterated riding pleasure and full functionality from the first meter. You can also be sure that you will receive the necessary service for your bike, as well as many tips on technology and the correct handling of your bike.

1. TEST RIDE

Take the time for a test ride. After all, your new bike should accompany you for many years. If possible, ride the routes for which you want to use your new bike. Also try similar models and different sizes. This will give you a feeling and an overview of whether the chosen bike suits you, or whether there are perhaps more optimal variants.

2. FINE TUNING

If you have certain preferences regarding the saddle, grips or pedals, your STEVENS retailer can individually replace these parts for you to ensure the optimal comfort level. Even a simple stem size adjustment can help you obtain a seating position perfectly adjusted to your body measurements. Minor changes in the equipment can also be discussed before purchase. This individual service will benefit you on every ride.

3. INSPECTION

A regular bike check-up at your retailer will ensure the proper function and positive riding experience on your STEVENS bike for many years to come. Wear-and-tear parts such as chain, brake pads or tires should be changed regularly and with technical products such as hubs, derailleurs or suspension forks it is advisable to stick to certain maintenance intervals.

4. EXTENDED WARRANTY

All first-time owners of a STEVENS bike receive our new six-year STEVENS warranty after the date of purchase. It includes comprehensive protection against production or material defects on all STEVENS frames and components. We are so convinced of the quality of our products that we offer this extended warranty for both aluminium and carbon frames.

5. BIKE LEASING

Whether you are employed by a company or self-employed, you can lease your STEVENS bike. Benefit of leasing: The purchase price is divided into up to 36 monthly instalments and is, in most cases, exempt from tax. This option applies to all bikes, whether trekking bike, sports bike or e-bike. After your employer has given their consent, you coordinate the transaction with your specialist retailer and leasing partner.

6. VALUE PROTECTION À LA STEVENS

Falls can transform an expensive frame into scrap metal in the fraction of a second. With our Crash Replacement Option for carbon frames we offer fall victims the following option: If the frame is irreparably damaged in a crash, you as the original purchaser have the option of purchasing a replacement frame with a 50 percent special discount for up to two years after purchase. (Does not apply in case of negligent or willful damage)



2021 STEVENS BIKES SPORT

STEVENS VERTRIEBS GMBH
ASBROOKDAMM 35
D-22115 HAMBURG | GERMANY

TEL: +49 40 71 60 70-0
FAX: +49 40 46 53 14
E-MAIL: INFO@STEVENSBIKES.DE

STEVENSBIKES.DE

YOUR STEVENS DEALER